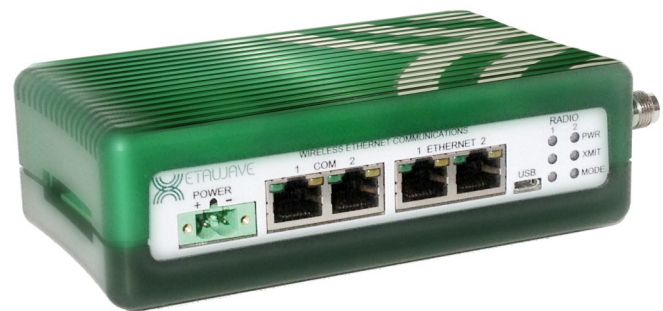


400 MHz FCC/IC Ethernet Software Defined Industrial Radio

The Xeta4 Ethernet radio is an extremely capable and flexible industrial software defined radio. The Xeta4 Ethernet radio is offered with an option to include 8 programmable inputs and outputs. The Xeta4 is based on the XetaWave patent pending Dual Decode Digital Architecture™ that offers significant receiver performance.

The Xeta4 supports multiple modulation schemes and features that can selectively switch to achieve optimal data throughput given the available channel size and environmental noise. **MultiSpeed MultiPoint™** mode enables



Endpoints operating at different over-

-the-air data transfer rates to communicate with an Access Point over the same network. The new **Enhanced multiPoint, XetaEMP**, mode provides an increase in throughput and decreased in latency over our standard modes and against competitive products.

Key Features

High Speed Over-the-air data transfer rates from 10 kbps to 57 kbps and increased throughput with the **XetaEMP** mode.

Low Latency Running in **XetaEMP** mode provides reduced latency times.

Selectable Modulation Multiple MSK, PSK, and QAM modulations.

Adjustable RF Output RF power output from 50 mW to 8 Watts (+17 dBm to +39 dBm).

Dual Band 406 to 430 MHz and 450 to 470 MHz operation.

Secure Over-the-air data encryption using 128-bit and 256-bit AES.

MultiSpeed Multipoint Access Points communicate with Endpoints operating at different RF Data Rates.

World Wide One version FCC and IC certified and one ETSI and RED certified.

Transmitter

Frequency Range	406 to 430 / 450 to 470 MHz
RF Output Power	50 mW to 8 Watts
Modulation	MSK, QPSK, 8PSK, 16QAM, 32QAM
RF Data Rate	10 kbps to 57 kbps
Occupied Bandwidth	12.5 (25 & 50 kHz available)
Frequency Stability	1.0 ppm

Data Transmission

Data Interface	Ethernet & RS232/422/485 Serial
Data Connector	RJ45 (4)
Data Interface Rate	10/100 Mbps (Ethernet) Up to 230.4 kbps (Serial)
Data Encryption	128 & 256-bit AES
Error Handling	CRC, FEC, Retransmit on error
XetaEMP	Increases throughput & reduces latency

Power

Input Voltage	+12 to +32 Vdc
Transmit Current	2.6 A @ +12 Vdc
Receive Current	300 mA @ +12 Vdc
Power Connector	2-pin Phoenix
RF Connector	TNC; 50 Ohms

Receiver

Channel Size	Sensitivity	Data Rate	Modulation
12.5 kHz	-116 dBm	10 kbps	MSK
	-104 dBm	23 kbps	QPSK
	-100 dBm	34 kbps	8PSK
	-106 dBm	45 kbps	16QAM
	-93 dBm	57 kbps	32QAM

also available in 25 & 50 kHz channels

Networking

Protocols	TCP, UDP, ARP, DHCP, NTP, FTP, ICMP, HTTP, & HTTPS
Management	Web GUI, SNMP v1, v2, & v3
Serial	TCP/UDP Server, TCP Client, Modbus RTU Server
VLAN	802.1q VLANs and trunks
Features	IP Routing, Net Filter, NAT, Port Forwarding

Environmental / Physical

Operating Temperature	-40°C to +75°C
Humidity	95% @ +40°C non-condensing
Safety	UL Class 1 Div 2
Dimensions	6.62" x 3.45" x 1.83" (L x W x H)
Weight	700 grams

Ordering (Contact XetaWave for other available models)

New Part Number	Old Part Number	Description
XETA4-22MMLFA	XETA4-EL	Metal Enclosed, 2 Ethernet & 2 Serial, Linux OS
XETA4-22MMLFA-IO	XETA4-EIOL	Metal Enclosed, 2 Ethernet & 2 Serial, 8 IO, Linux OS
XETA4X4-22MMLFA	XETA4X4-EL	Metal Enclosed, 2 Ethernet & 2 Serial, Linux OS, Dual RF
XETA4X4-22MMLFA-IO	XETA4X4-EIOL	Metal Enclosed, 2 Ethernet & 2 Serial, 8 IO, Linux OS, Dual RF

