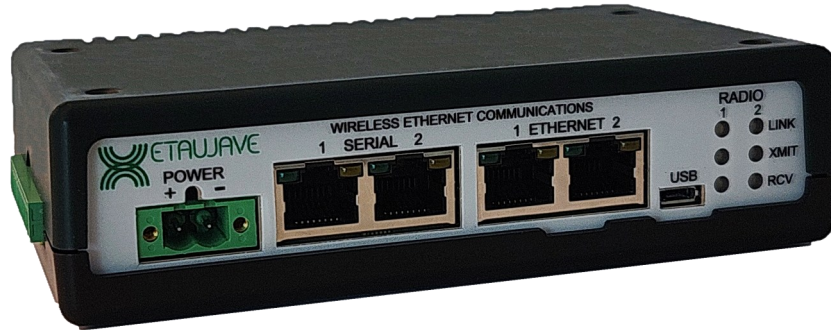


XetaEdgePlus



Industrial Edge Computer

Quad-Core Cortex A76 | 64-bit | 2.4 GHz

Raspberry Pi Compute Module 5

-20°C to +85°C Industrial Temperature Range

UL Class 1 Division 2

Options

RAM 2, 4, & 8 GB | Flash 16, 32, & 64 GB

Software Defined Radio | LTE Cell Modem

8 Programmable I/O

Host applications like the AUTOSOL eACM, Inductive Automation Ignition Edge, Node-RED, AVEVA Edge IoT View, Codesys, PLC Shift and many others.